

REVIEW:

Elijah was God's prophet, and he told God's people messages from God. The people didn't like all of God's messages, and Elijah was scared and lonely. So, God sent him to a farm where Elisha was working. God chose Elisha to be Elijah's friend and helper. Elisha burned his plow then had a goodbye celebration with his family and left to go with Elijah. Every time Elijah went somewhere with a message from God, Elisha went with him to help. Elijah and Elisha were friends for years. When God took Elijah to heaven, He gave Elisha a double share of God's Spirit.

Who was God's messenger first? EliJAH

Who started out as a farmer? EliSHA

Who needed a friend to help? EliJAH

Who went to the farm? EliJAH

Who burned the plow and had a party? EliSHA

Who kept traveling to places with God's messages? EliJAH

Who followed his friend everywhere to help? EliSHA

Who wanted a double share of God's Sprit? EliSHA

Who was taken to heaven in a gold chariot and a whirlwind? EliJAH

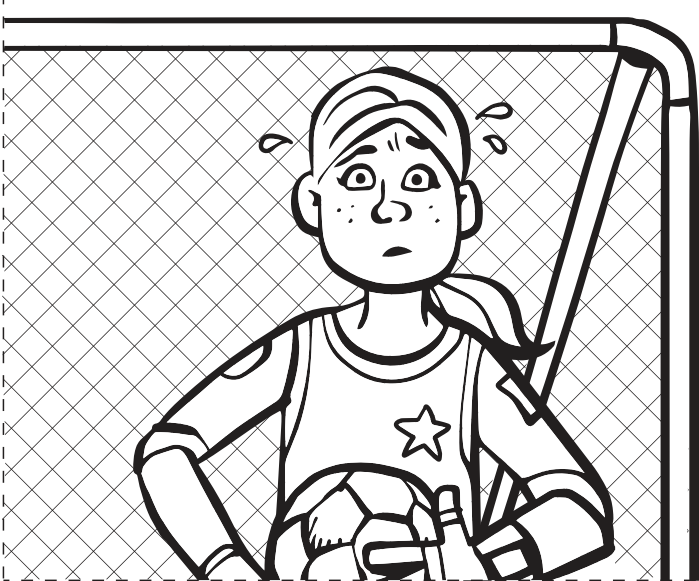
Whose coat did Elisha wear when he parted the Jordan River? EliJAH

Who was Elijah's best friend and helper? EliSHA

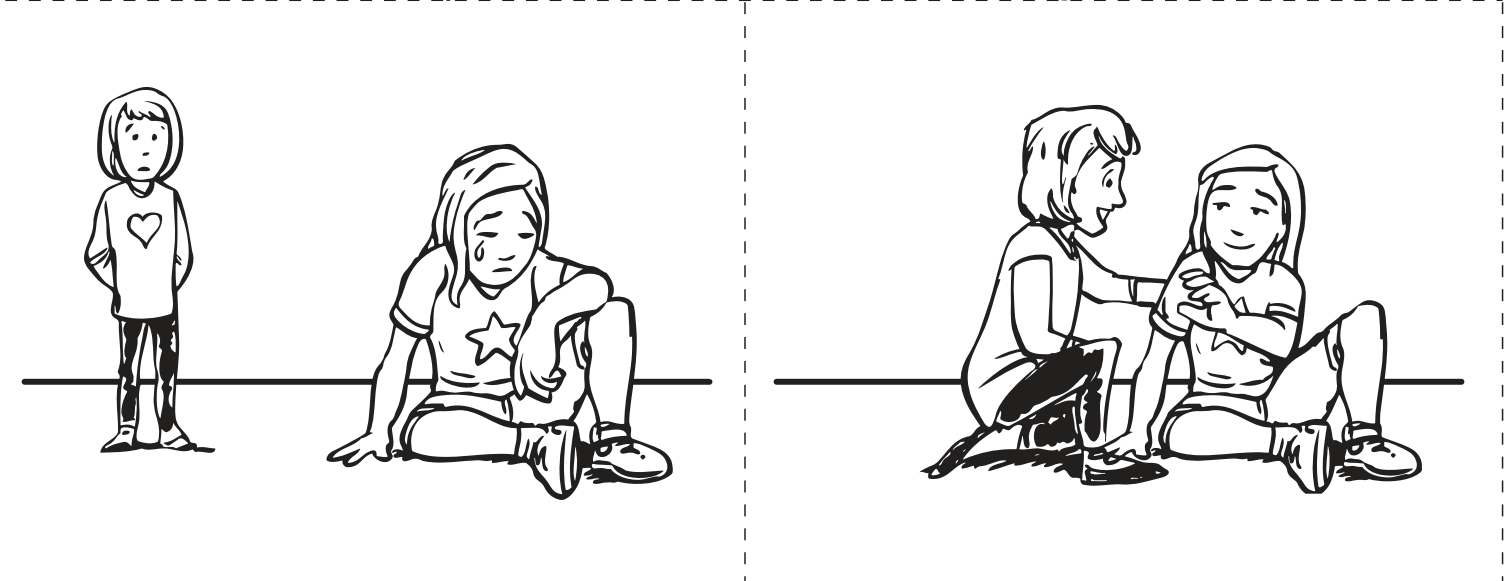
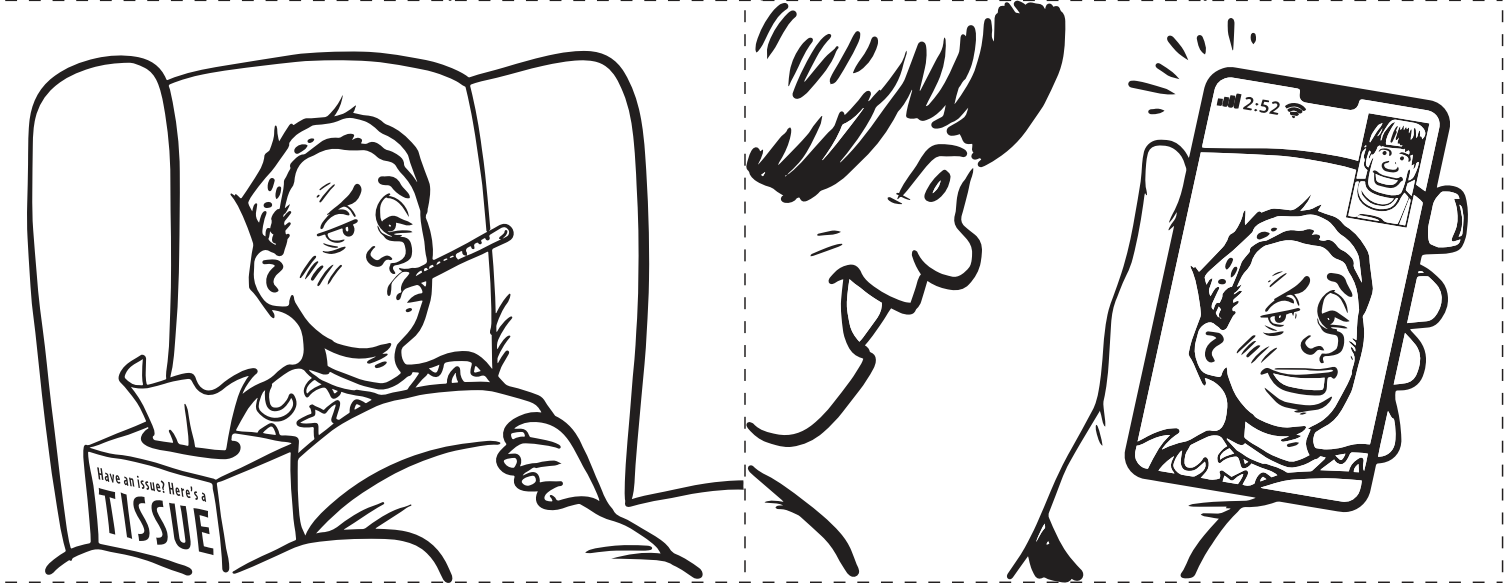
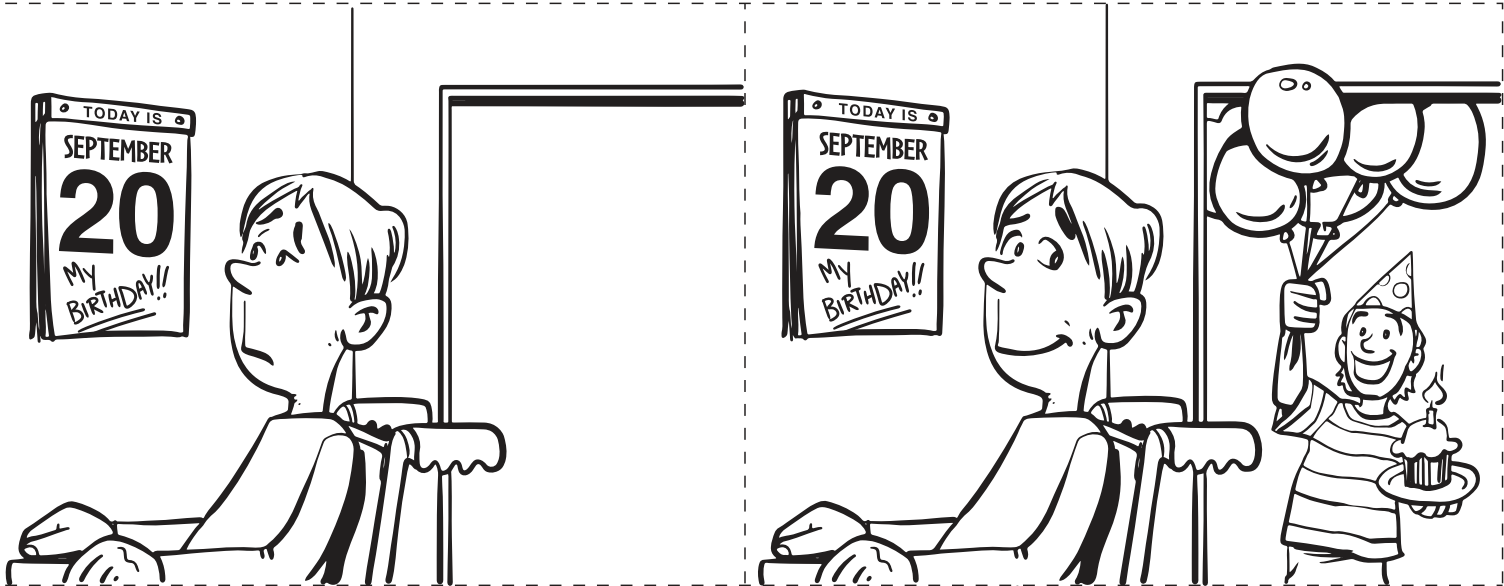
Who was Elisha's best friend and teacher? EliJAH

What to Do:

Print one for each small group.



What to Do:
Print and cut apart. Provide one set for each small group.



What to Do:
Print and cut apart. Provide one set for each small group.